

About Southwest Behavioral Health Management, Inc.

Southwest Behavioral Health Management, Inc. (SBHM) is a non-profit organization and the Primary Contractor responsible for the oversight and management of behavioral health and substance use services for the Pennsylvania Behavioral Health Choices Medicaid Program of six Southwestern Pennsylvania counties: Armstrong, Butler, Indiana, Lawrence, Washington, and Westmoreland. SBHM provides fiscal management, program development, training, and technical assistance to support effective and evidenced based behavioral health services. Headquartered in New Castle, PA, SBHM is dedicated to improving access and quality of care for behavioral health needs.

Visit us at sbhm.org

About Bridge Builders Community Foundations

Bridge Builders Community Foundations is a philanthropic nonprofit organization that serves Venango, Forest, and Clarion counties. Through this innovative scholarship opportunity, Bridge Builders has expanded its reach to serve Armstrong, Indiana, Butler, Lawrence, Washington and Westmoreland counties. Its mission is to enhance quality of life in the region by providing grants and scholarships, supporting community development, and promoting local philanthropy. Established with a vision to connect people, organizations, and resources, BBCF works to strengthen the local community by fostering collaboration and creating lasting positive impacts through various initiatives and programs.

Contact Us

1322 Elk Street, Franklin, PA 16323
814-677-8687
tessa@bbcf.org



Help for Our Helpers

Current Provider Scholarship

Brought to you in partnership with:



Investing in Your Future

Southwest Behavioral Health Management (SBHM) is committed to fostering the next generation of professionals dedicated to clinical and behavioral services. Its scholarship fund was established to provide financial assistance to students pursuing higher education in fields that enhance community well-being.

Program Purpose

The Help for Our Helpers Scholarship is designed to support students as they work toward higher degrees in clinical and behavioral services fields. It aims to empower individuals to achieve their educational and professional goals in service-oriented professions, while also reflecting SBHM's dedication to fostering professional excellence and improving community well-being.

Award Details

Maximum Annual Award:
\$5,000 per academic year

Total Award Cap:
\$10,000 per student

Eligibility Requirements

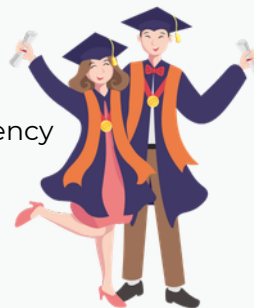
Applicants must have both their place of employment and residency within one of the six counties listed below. Applicants must be employed by an entity contracted with Carelon Behavioral Health of PA. They may be either direct service providers or non-clinical staff, such as clerical, administrative, or support personnel.

- 📍 Armstrong
- 📍 Butler
- 📍 Indiana
- 📍 Lawrence
- 📍 Westmoreland
- 📍 Washington

Degree Fields

Applicants must pursue a bachelor or graduate degree in one of the following fields of study:

- ✔️ Social Work
- ✔️ Counseling
- ✔️ Psychology
- ✔️ Chemical Dependency
- ✔️ Sociology (Bachelor Only)
- ✔️ Human Services (Bachelor Only)



How to Apply

For more information about eligibility, application requirements, and deadlines, contact the BBCF office at:

☎️ 814-677-8687

Or, scan this QR code which will take you directly to our online application:



Know Someone Who May Be Eligible?

We encourage you to share this opportunity with a graduate you know who may be interested in pursuing further education in these fields. Reach out to BBCF for information regarding the process, selection and timing.